



**SEMI-INDUSTRIAL
UPS SYSTEMS**

**S1300
30–500 kVA**

Key features

- ▶ Online UPS with high efficiency
- ▶ Large power range 30–500 kVA
- ▶ Power factor corrected (PFC) rectifier
- ▶ Without power transformers
- ▶ Touchscreen with large control panel
- ▶ Various communication possibilities

Operational benefits

- ▶ Highest reliability at compact footprint
- ▶ Consistent operation over full range
- ▶ No reactive power consumption
- ▶ Compact and lightweight construction
- ▶ Easy control and supervision of system
- ▶ Flexible remote monitoring

S1300 – Reliable UPS for Semi-Industrial applications

The S1300 is a robust UPS solution for all semi-industrial applications like data centres, production facilities, back-up systems in the health sector, banks, chemical processing units, public buildings or in other infrastructure systems. The compact UPS system S1300 is the reliable solution for all critical infrastructure.



Reliability through modern design

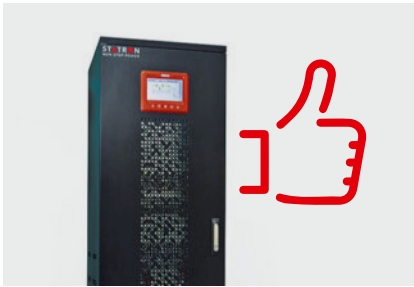
- Double conversion online UPS with high efficiency (up to 96 %) and compact construction
- High efficiency thanks to Power Efficiency Mode (PEM)
- Output designed for PF 1.0 loading
- Power factor corrected (PFC) rectifier, PF 0.99, THDi < 3 %
- Dynamic Charge Mode (DCM) reduces battery recharge time
- Advanced Battery Care (ABC) extends battery lifetime
- Power transformer free UPS design leads to low weight and high efficiency
- Large touchscreen, easy operation and monitoring
- Comprehensive set of communication options for flexible remote monitoring
- Same handling and spare parts over full power range



Modern Human Machine Interface

The touchscreen of the S1300 facilitates a comprehensive and flexible human machine interface (HMI). An easy and intuitive operation and control of the system is achieved through:

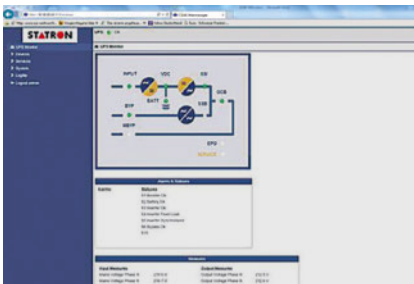
- Intuitive menu structure
- Colour display
- Mimic diagram
- LED status indications



Includes many advantageous features in standard configuration

In contrast to the market standard, the S1300 system includes many advantageous features already in the standard configuration, such as:

- SNMP (Ethernet) communication board
- HTTP (Ethernet) communication board
- Dry-contact relay board
- Alarm relay card
- External digital inputs
- Large colour touchscreen (> 60 kVA systems)
- Input-, output- and manual bypass switches



Remote communication

The S1300 systems offer various possibilities for the integration into overlaying control and monitoring systems. It offers various digital inputs, such as:

Optional communication parts are available, such as:

- Remote emergency off
- External battery breaker
- External maintenance bypass breaker
- Generator operation

- Modbus-TCP/IP (Ethernet)
- Modbus-RTU (RS485)
- PROFIBUS DB



Reliable battery use and management

Battery monitoring and management is a key factor for a reliable and durable power back-up. The Statron S1300 has class leading built-in features, such as:

- Battery availability check
- Battery monitoring (constantly updated battery capacity and battery back-up time)
- Automated / manual partial discharge testing
- Compatible with different battery types
- Two charge voltages battery
- Two individual battery charge current limitations

Technical specification | S1300 30–500 kVA

Rating kVA	30	40	60	80	100	125	160	200	250	300	400	500
Rated active output power (cos = 1) kW	30	40	60	80	100	125	160	200	250	300	400	500
AC / AC efficiency	@ 25 % load	92.0 %	92.0 %	93.0 %	93.0 %	93.0 %	93.0 %	94.5 %	94.5 %	94.5 %	94.8 %	94.8 %
(VFI – online double conversion)	@ 50 % load	93.5 %	93.5 %	94.5 %	94.5 %	94.5 %	94.5 %	95.5 %	95.5 %	95.8 %	96.0 %	96.0 %
	@ 75 % load	94.0 %	94.0 %	95.0 %	95.0 %	95.0 %	95.0 %	96.0 %	96.0 %	96.0 %	96.0 %	96.0 %
	@ 100 % load	94.0 %	94.0 %	95.0 %	95.0 %	95.0 %	95.0 %	95.5 %	95.5 %	95.5 %	95.6 %	95.6 %

Rated input voltage	400 V AC	
Tolerance	-20 / +15 %	
Input frequency (selectable)	50-60 Hz	
Tolerance	+ / -10 %	
Input current harmonic distortion (THDi)	@ 25 % load	< 5
	@ 50 % load	< 4
(at rated voltage, THDv < 0.5 %)	@ 75 % load	< 3
	@ 100 % load	< 3
Output voltage static stability	+ / -1 %	

Rated output current (@ 400 V AC)	44 A	58 A	87 A	115 A	144 A	180 A	231 A	289 A	361 A	433 A	577 A	700 A
-----------------------------------	------	------	------	-------	-------	-------	-------	-------	-------	-------	-------	-------

Overload capability	>100...125 % / 110 % for 160–500 kVA unit	10 min										
	>110...125 % / Only for 160–500 kVA unit	5 min										
	>125...150 %	30 s										
	>150 %	100 ms										
Short circuit current	101 A	133 A	265 A	330 A	400 A	490 A	640 A	720 A	900 A	1050 A	1400 A	1800 A
Short circuit characteristic	Current limited electronic protection. Automatic stop after 5 seconds.											
Output wave form	Sinusoidal											
Automatic bypass	Electronic thyristor switch											
Protection	Fuses											
Rated input voltage (selectable)	380 – 400 – 415 V AC											
Tolerance	+ / -10 %											
Overload capability	150 % continuously											
	1000 for 1 cycle											
Manual bypass	– Electronically controlled											
	– No-break assisted re-start procedure											

Rating kVA	30	40	60	80	100	125	160	200	250	300	400	500
Rated active output power (cos = 1) kW	30	40	60	80	100	125	160	200	250	300	400	500

General Data													
Ambient temperature	UPS 0÷40 °C												
Relative humidity (non condensing)	< 95 %												
Altitude	< 1000 m (above sea level)												
Power derating for altitude > 1000 m	IEC/EN 62040-3 0.5 % every 100 m												
Cooling	Forced												
Acoustic noise (IEC/EN 62040-3)	< 57 dB	< 60 dB					< 65 dB			< 72 dB			
Protection degree	IP20												
Colour / Paint	RAL 9005 (other colour optional)												
Safety	IEC/EN 62040-1												
EMC	IEC/EN 62040-2												
Performance & Test	IEC/EN 62040-3												
Conformity	CE-Label												
Accessibility	Front and side access												
Installation	Against the wall												
Front panel	LCD	Touchscreen 7"					Touchscreen 10"						
Serial communication interface	Standard: RS232/USB Optional: RS485 (ModBus RTU protocol)												
Parallel configuration (optional)	Up to 5+1 (parallel redundant) Up to 6 (power parallel)												
Height*	1230 mm			1800 mm				1978 mm					
Width*	465 mm			560 mm				880 mm		1450 mm			
Depth*	650 mm				940 mm				970 mm				
Weight*	120 kg	140 kg	250 kg	300 kg	320 kg	360 kg	380 kg	720 kg	850 kg	900 kg	930 kg	1250 kg	

* dimensions for IP20 and basic configuration
Further data available on request

© 2019 Statron AG, data subject to change without notice